

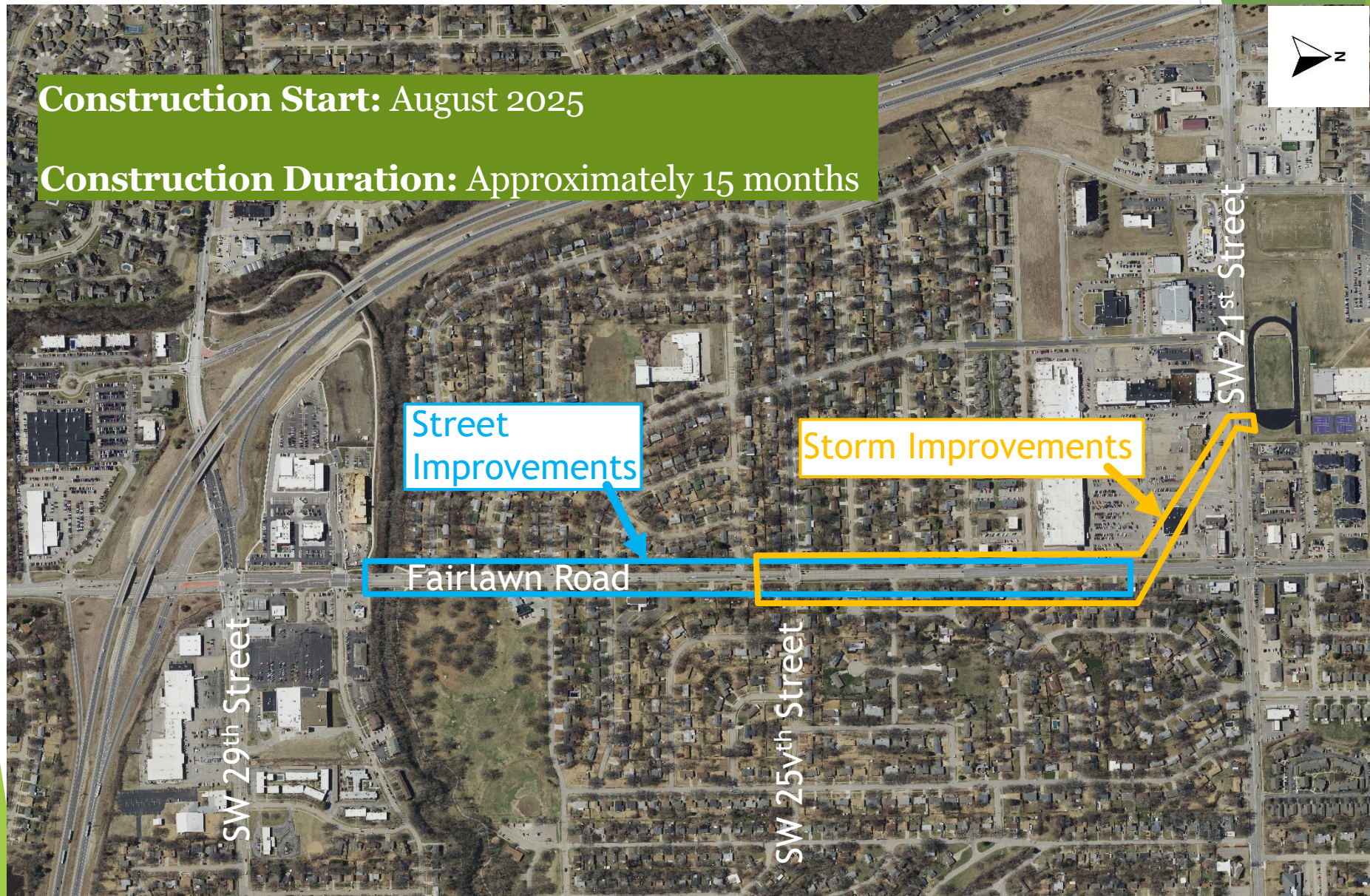
Project Nos. 701040.00, 502730.00, 281250.17, & 291143.04

SW Fairlawn Road: 28th Street to 22nd Place

Street, Stormwater, Waterline, and Sanitary Sewer Improvements Project

Construction Start: August 2025

Construction Duration: Approximately 15 months



Project Contacts

Contractor – Sunflower Paving

Jim Beldon– 785 424-5535

City of Topeka Inspector

Greg Slater– 785 806-2103

Maria Del Sol Munoz– 785 787-1642

City of Topeka Project Managers

Joe Harrington– 785 368-3842 (Street)

Zach Stueve – 785 368-3122 (Stormwater)

Duncan Theuri – 785 368-0152 (Waterline)

Michelle Neiswender – 785 368-4251 (Sanitary Sewer)

Design Engineers

Benesch – Brad Johnson – 785 408-9413 (Street)

Benesch – Michael Stewart – 785 633-9061 (Street)

WSP – Eric Broce – 316-370-9670 (Storm, Water & Sanitary)

WSP – Angela Gutierrez – 316-370-9673





Project Scope of Work (Street)

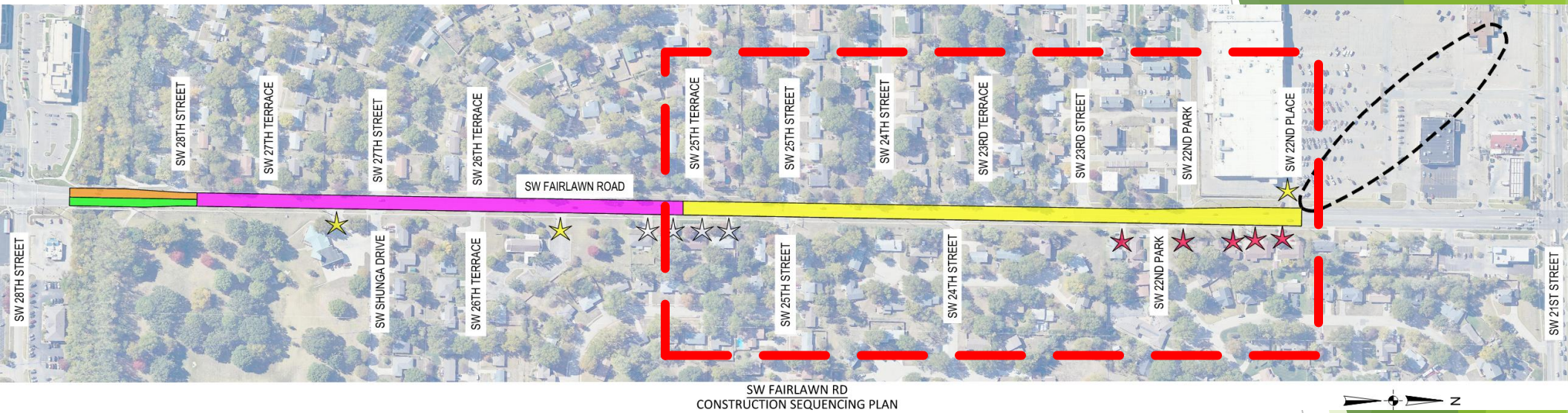
- Street Repair
 - Mill/Overlay
 - Spot patching (full depth)
 - Full pavement replacement from 25th thru 22nd Place
 - Spot curb replacement
 - Select sidewalk and sidewalk ramps in poor condition will be replaced/modernized
- Street Widening
 - At 22nd Pl: Includes left-turn into Dillons
 - At 25th St: Includes left-turn lanes onto 25th Street
- Bridge Repair
 - Bridge and approach pavement being repaired
 - Includes partial and full depth bridge deck repairs

Project Access & Traffic Control

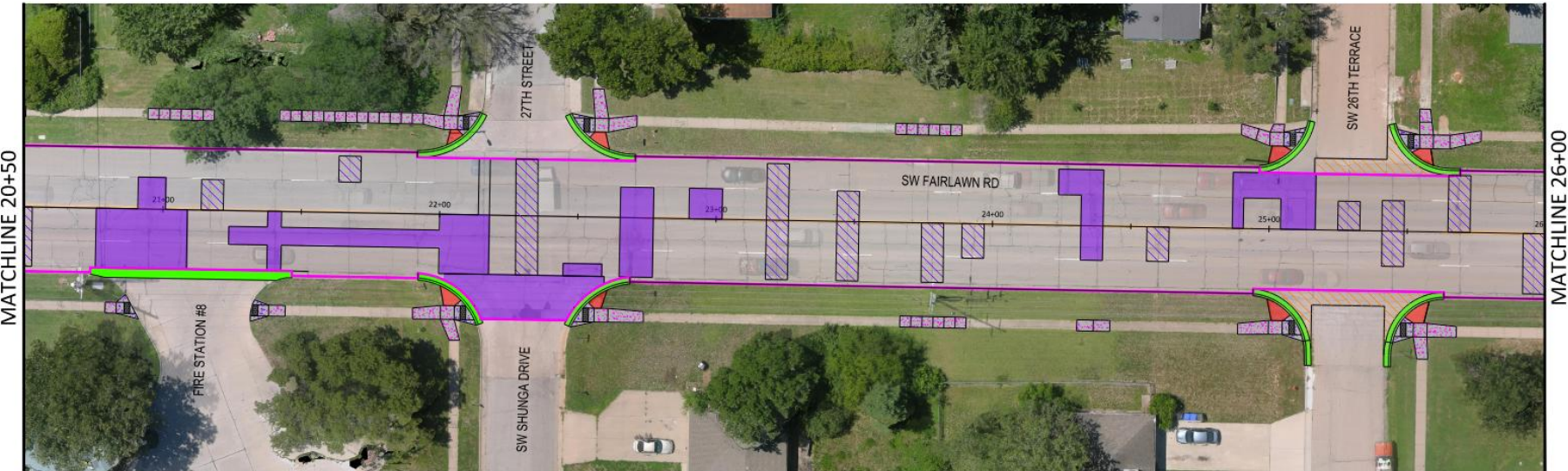
- **Fairlawn Traffic:**
 - Close portions of Fairlawn (Detour on Gage)
 - Fully closed from 25th Terrace thru 22nd Place
 - This segment closed for full duration of project
 - *Map on next slide*
- **Side-Street Traffic:**
 - Intersections will be closed at times, including 25th
 - School pedestrian crossing will be provided
 - Fairlawn crossing might be in a different location
- **Driveways on Fairlawn:**
 - Access will be provided.



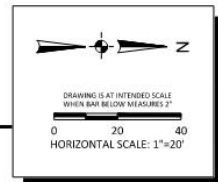
Project Access & Traffic Control



Typical Street Repair



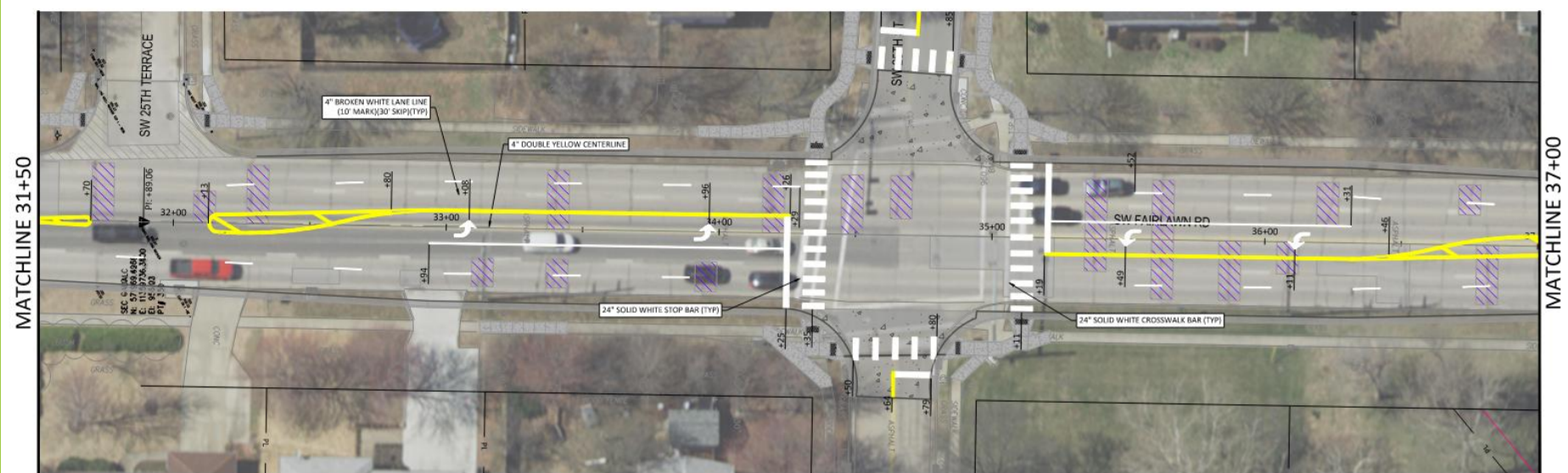
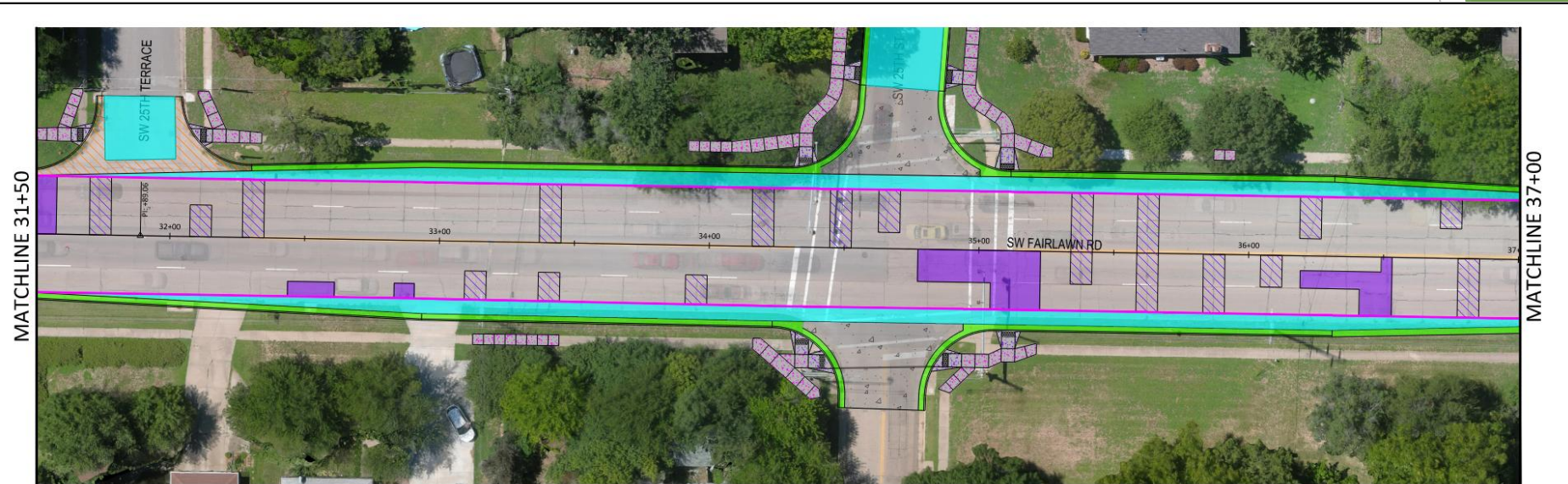
SW FAIRLAWN RD PAVEMENT REPAIR PLAN
Scale: 1" = 20' (Full Size)



SW FAIRLAWN RD PAVEMENT REPAIR PLAN
Scale: 1" = 20' (Full Size)

LEGEND	
	CONCRETE APPROACH SLAB RECONSTRUCTION
	FULL DEPTH PATCH W/ OVERLAY (2")
	ADDITIONAL 2" MILL AND OVERLAY (2")
	FULL DEPTH PATCH W/ OVERLAY (2") (PAVEMENT WIDENING)
	APPROACH SLAB PATCH
	8" CONCRETE VALLEY GUTTER
	FULL DEPTH CONCRETE PAVEMENT
	CONCRETE SIDEWALK
	SIDEWALK RAMP
	SIDEWALK REMOVAL SUBSIDIARY, BRING TO SMOOTH GRADE SUBSIDIARY
	CONCRETE MANHOLE DIAMOND
	ADJUST EX WATER VALVE
	MILL AND OVERLAY LIMITS
	CURB & GUTTER REPLACEMENT
	TRANSITION BARRIER RAIL REPLACEMENT

Widening at 25th

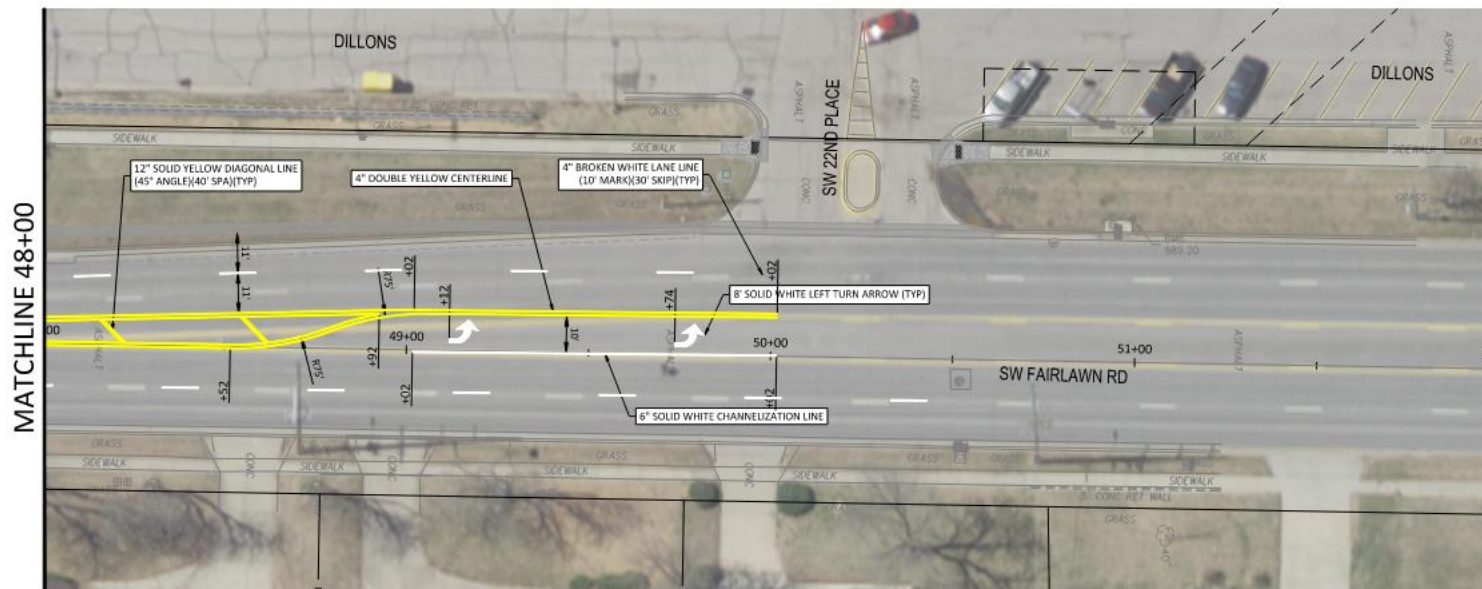


SW FAIRLAWN RD PAVEMENT REPAIR PLAN
Scale: 1" = 20' (Full Size)

Widening at Dillons



SW FAIRLAWN RD PAVEMENT REPAIR PLAN
Scale: 1" = 20' (Full Size)



SW FAIRLAWN RD PAVEMENT REPAIR PLAN
Scale: 1" = 20' (Full Size)

Stormwater - Project Need

- ▶ The existing 72" and 48" corrugated metal pipes along SW Fairlawn Road between SW 25th Street and SW 21st Street show signs of severe deterioration and are near failure. Failure of these pipes could lead to sink holes under traffic ways and in right-of-way.
- ▶ This project will replace the existing parallel storm sewers along Fairlawn Road, between SW 25th Street and SW 22nd Place with a single reinforced concrete box.
- ▶ The project will also rehabilitate the existing storm sewer located under the Dillions parking lot to 21st Street.



Project Scope of Work (Storm)



- The project consists of installing the following:
 - Approximately 880 feet of 6'x4' Reinforced Concrete Box
 - Approximately 670 feet of 4'x4' Reinforced Concrete Box
 - Approximately 1,200 feet of new Reinforced Concrete Pipe
 - 48 new storm sewer inlets
 - Approximately 1,000 feet of storm sewer rehabilitation
 - Plug & Abandon existing deteriorated storm sewer pipe



Project Overview (Storm)



LEGEND

-  STORM SEWER REPLACEMENT
-  STORM SEWER REHABILITATION

LOCATION MAP

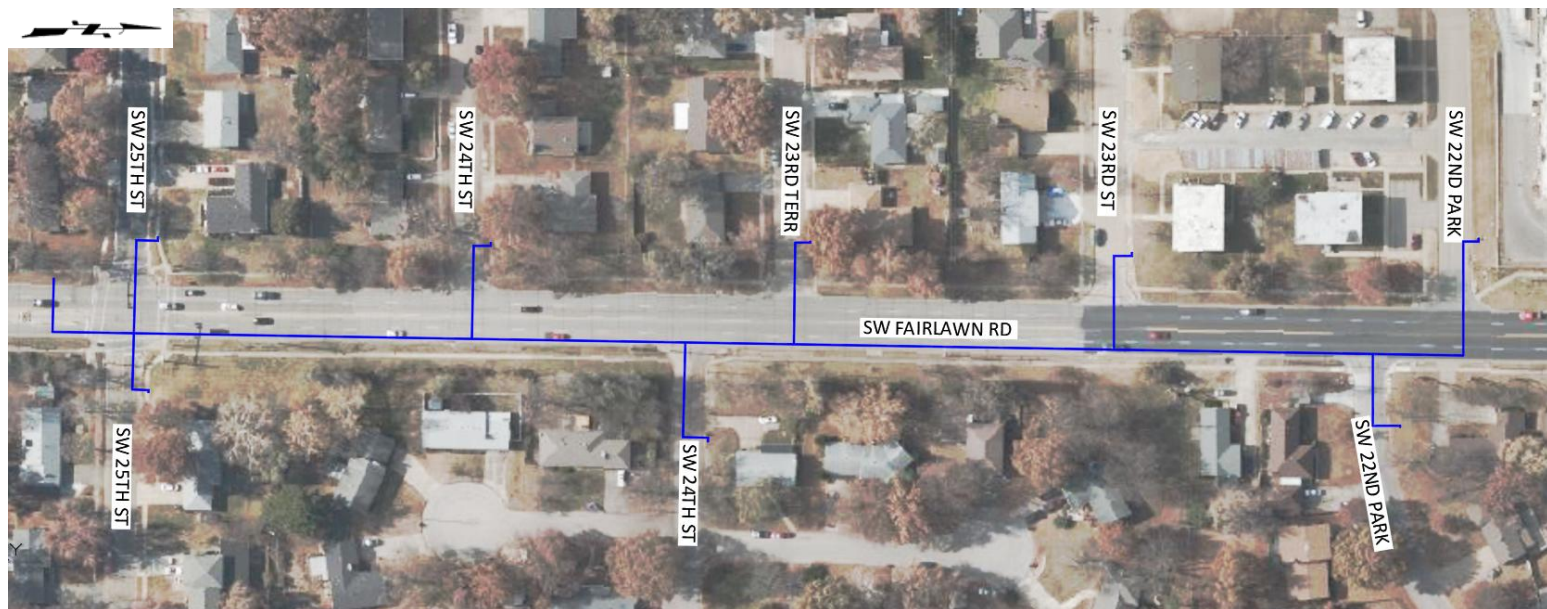


Project Scope of Work (Water)

- The project consists of installing the following:
 - Approximately 2,220 feet of waterline replacement

LEGEND

 WATERLINE REPLACEMENT



Project Scope of Work (Sanitary)

- The project consists of installing the following:
 - Approximately 1,200 feet of sanitary sewer replacement/rehabilitation

LEGEND

 SANITARY SEWER REPLACEMENT



QUESTIONS?

